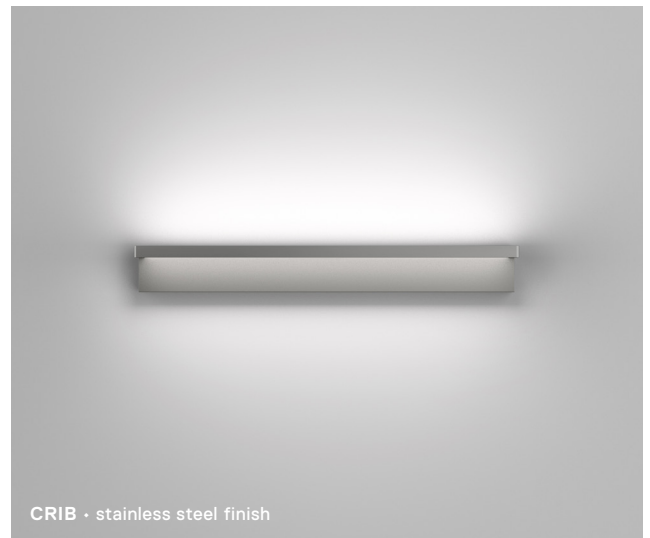
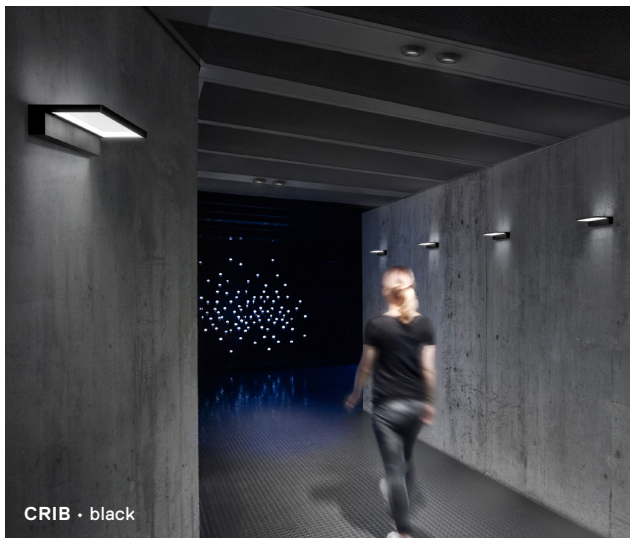


CRIB

Data Sheet

Wall



When switched off, CRIB is a formally extremely reduced wall object made up of a simple metal body and a transparent glass surface. It is only when switched on that the sophistication of the glass element is revealed, as LED light is supplied via its polished edge: A delicate, specially treated pane of glass distributes the light evenly upwards and downwards.

CRIB blends in particularly well in contemporary interiors and is available with black or white coated housing with a stainless steel or chrome finish. It can be mounted horizontally and vertically and with its minimalist shape creates a magical light effect when used as a single luminaire or in a row of several units

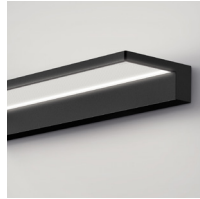
Design Manfred Wolf

Material

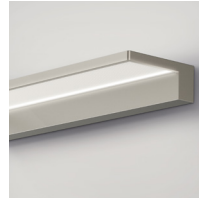
Surfaces



matt white
RAL 9010



matt black
RAL 9005



stainless steel finish



Chrome finish

Housing

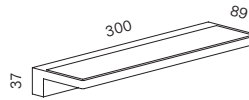
Aluminium black or white coated, stainless steel finish or chrome finish

Lamp cover

Optiwhite glass with microstructure

Variations

Dimensions in mm



Weight

0,75 kg

LED

Light color

Color rendering Index CRI

Color consistency

Luminous flux

Energy efficiency class

2700 K

>90

3 Step

155 lm/W

D

Other versions (CCT/CRI) available on request.

LED light source replaceable by professionals

Average life 50,000 h, all specification according to LED-manufacturer.

Control gear

Control

Connected load

Operating voltage

Constant current / voltage

Feature

TRIAC

12 W

230 V AC / 50 Hz

250 mA / 42 V

dimnable

Control gear replaceable by professionals

The luminaire may be operated at a maximum of the constant current specified above.



CRIB

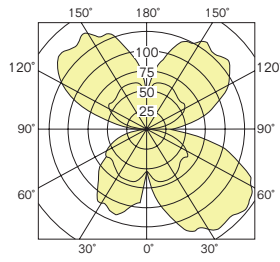
Wall

Photometric data sheet

CRIB Wall



light: upwards and downwards diffuse



Power

CRI

CCT

Luminous flux
(measured value)

12 W

>90

2700 K

880 lm



Note: The photometric data (EULUMDAT) can be downloaded from <https://serien.com/downloads/>



CRIB Wall

figure	description	lamp	control	power	CCT	art.-no.
●	black	LED	TRIAC	12 W	2700 K	CR1001
○	white	LED	TRIAC	12 W	2700 K	CR1002
●	stainless steel finish	LED	TRIAC	12 W	2700 K	CR1003
●	chrome finish	LED	TRIAC	12 W	2700 K	CR1005

CRIB Wall IP44

figure	description	lamp	control	power	CCT	art.-no.
●	black	LED	TRIAC	12 W	2700 K	CR1101
○	white	LED	TRIAC	12 W	2700 K	CR1102
●	stainless steel finish	LED	TRIAC	12 W	2700 K	CR1103
●	chrome finish	LED	TRIAC	12 W	2700 K	CR1104

Information

+ C	+C indicates products with pre-programmed CASAMBI module integrated in the luminaire. The CASAMBI functionality is basically applicable to all our products. For the different possibilities of integration (depending on the temperature) – in the luminaire, in the suspended ceiling, in the switch or the distribution box) we will be pleased to inform you. CASAMBI is a lighting control system which is operated via Bluetooth and can be integrated completely into the luminaire or behind the light switch. It is controlled via mobile devices using the free CASAMBI app, making its operation simple and intuitive. CASAMBI expands the possibilities of control with new options such as dimming, the programming of specific scenarios or groups, automations and many more. For further information, please visit www.casambi.com .
CCT	CCT (Correlated Color Temperature) is the colour temperature of an LED and is specified in Kelvin (K). We supply LED lights with a colour temperature of 2700 K at short notice. LED lights with a color temperature of 3000 K and higher usually have longer delivery times.
CRI	Colour Rendering Index
D2W	Dim2Warm refers to a luminaire functionality that imitates the pleasant dimming behavior of classic incandescent lamps. When dimmed, the light not only becomes darker, but also changes its colour to warm white tone.
DALI 1-10 V	5-core mains cable required for control via DALI or 1–10 V. All LED luminaires operated with DALI power supply units are suitable for use in emergency lighting systems.
Lumen	The luminous flux (lumen) specifications are nominal values, i.e. pure module luminous flux values. The luminous flux indicates how much light radiates in all directions.
TW	Luminaires with this characteristic have variable colour temperature control from warm to cool white light.
UGR	Unified Glare Rating
IP	Protection class
LOR	The luminaire operating efficiency is given as a LOR value (Light Output Ratio) in percent.
	The crossed-out wheelee bin indicates that this electrical appliance must not be disposed of via household waste. In order to protect human health and the environment against potentially hazardous substances, at the end of its lifecycle this product can be taken to a collection point close to you and disposed of free of charge there. This separate disposal enables electrical appliances to be reused or recycled.
	At www.serien.com/downloads you will find helpful information and the latest technical data: Data sheets, catalogues, price lists, lighting data (EULUMDAT), 3D CAD data, EU Energy labels, declarations of conformity, returns form, FAQs, assembly instructions, drilling templates and other service instructions.
✓	This data sheet supersedes all previously published data sheet. The drawings shown in this document are for informational purposes only. Although great care has been taken when creating them, their proportions may not correctly reflect the proportions of the real product.
	All values are rated values. Power and luminous flux are subject to an initial tolerance of +/- 10%. Tolerance of color temperature: +/-150 K. When not otherwise indicated the values apply for an ambient temperature of 25 °C. The specified nominal and measured values refer to the illuminants used at the time the data sheet was prepared. Omissions excepted.

Imprint

serien Raumleuchten GmbH, HRB 22042 Amtsgericht Offenbach. Managing Directors: Jean-Marc da Costa, Manfred Wolf. All rights reserved.
No reproductions without prior written consent. All trademarks are registered. All products are protected by law. Infringements will be prosecuted to the fullest extent. Subject to alteration without notice.